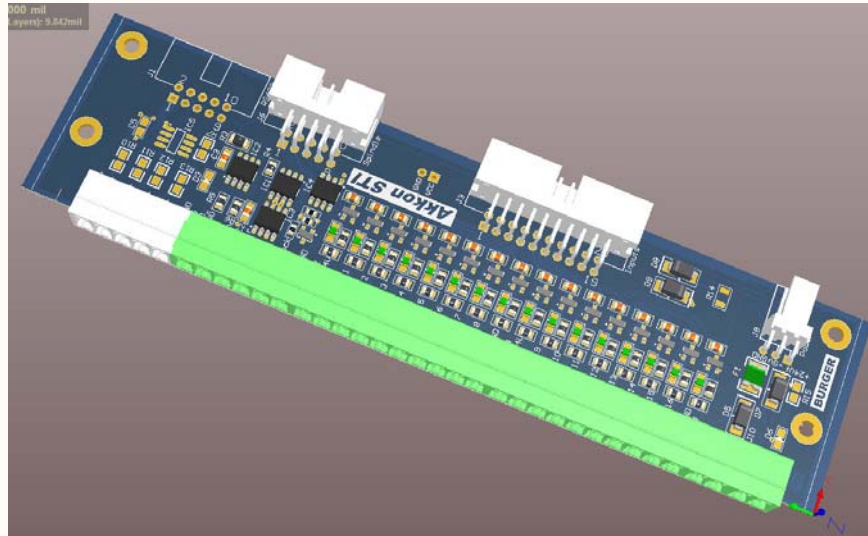


Project: AKKON AIM1001



Anderungsjournal

| Ver | Datum | Änderungen |
|-------|------------|-------------------------------------|
| V1.0a | 31.01.2014 | first version |
| V1.0a | 04.12.2016 | changed value of R4 from 1k to 270k |
| V1.0a | 02.11.2017 | improved part list and some text |
| V1.0a | 05.11.2017 | improved schematics |
| | | |

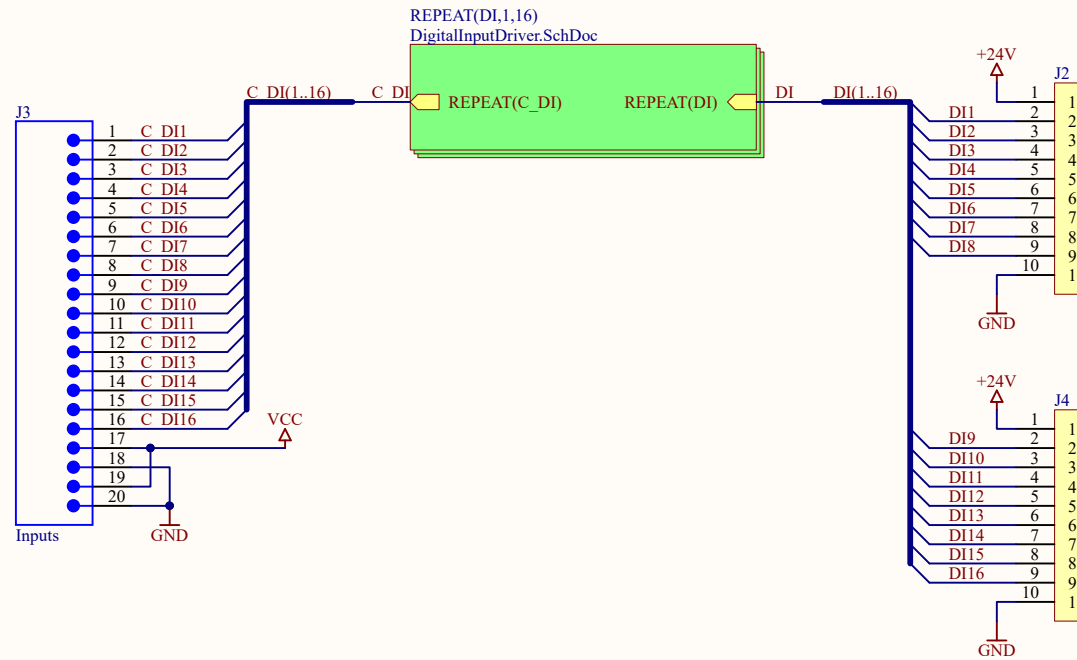
| | | |
|-------------------------------|---------------------------------|---------------------|
| Title: Overview | | BURGER |
| Project: AKKON AIM1001 | | |
| Author: Gerhard Burger | | |
| Approved:* | | |
| Date: 06.11.2017 | Time: 10:11:33 | |
| Page: 1 of 6 | Version: 1.0a Schem. Rev.: 1.01 | |
| File: Overview.SchDoc | | Project ID: AIM1001 |

Power
Power24V.SchDoc


Project Overview
Overview.SchDoc

RS422
RS422Driver.SchDoc

Analog outputs
Spindle.SchDoc

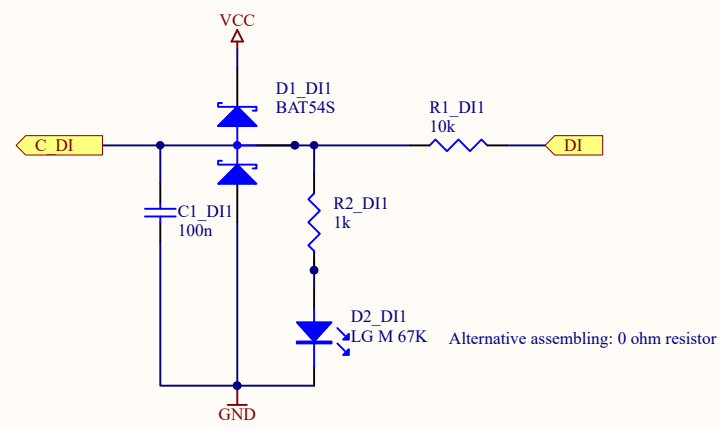


| | |
|-------------------------------|---------------------|
| Title: Concept | |
| Project: AKKON AIM1001 | Project ID: AIM1001 |
| Author: Gerhard Burger | |
| Approved: | |
| Date: 06.11.2017 | Time: 10:11:33 |
| Page: 2 of 6 | |
| Version: 1.0a | Schem. Rev.: 1.01 |
| File: AKKON_Sti.SchDoc | |



www.burgerweb.com

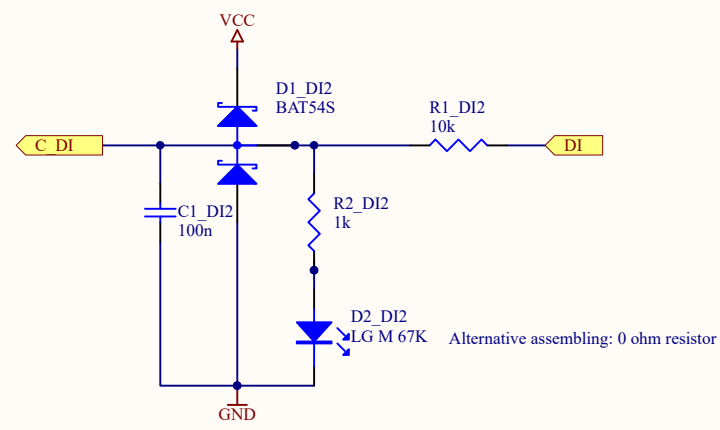
This material is protected by copyright. All rights reserved.
Please contact the publisher for permission to copy, distribute or reprint.



| Input conditions | D2 | R1 | R2 | Remarks |
|------------------|----------|-----|-----|--|
| Ie = 2mA @24V | 0 | 10k | 1k5 | Led not necessary if using AKKON STI-Led |
| Ie = 2mA @24V | LG M 67K | 10k | 690 | Led with Uf = 1.8 V |

| | | |
|---------------------------------|-------------------|---------------|
| Title: Digital inputs | | BURGER |
| Project: AKKON AIM1001 | | |
| Author: Gerhard Burger | | |
| Approved:* | | |
| Date: 06.11.2017 | Time: 10:11:33 | |
| Page: 3 of 6 | | |
| Version: 1.0a | Schem. Rev.: 1.01 | |
| File: DigitalInputDriver.SchDoc | | |

This material is protected by copyright. All rights reserved.
Please contact the publisher for permission to copy, distribute or reprint.

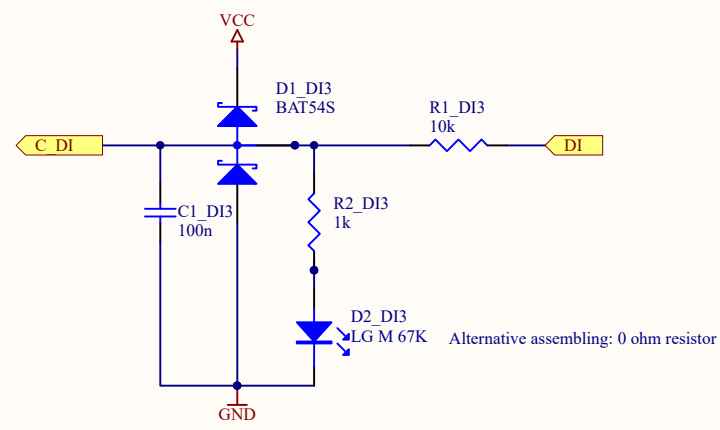


Alternative assembling: 0 ohm resistor

| Input conditions | D2 | R1 | R2 | Remarks |
|------------------|----------|-----|-----|--|
| Ie = 2mA @24V | 0 | 10k | 1k5 | Led not necessary if using AKKON STI-Led |
| Ie = 2mA @24V | LG M 67K | 10k | 690 | Led with Uf = 1.8 V |

| | | |
|---------------------------------|----------------|---------------|
| Title: Digital inputs | | BURGER |
| Project: AKKON AIM1001 | | |
| Author: Gerhard Burger | | |
| Approved:* | | |
| Date: 06.11.2017 | Time: 10:11:33 | |
| Page: 3 of 6 | Version: 1.0a | |
| Schem. Rev.: 1.01 | | |
| File: DigitalInputDriver.SchDoc | | |

This material is protected by copyright. All rights reserved.
Please contact the publisher for permission to copy, distribute or reprint.

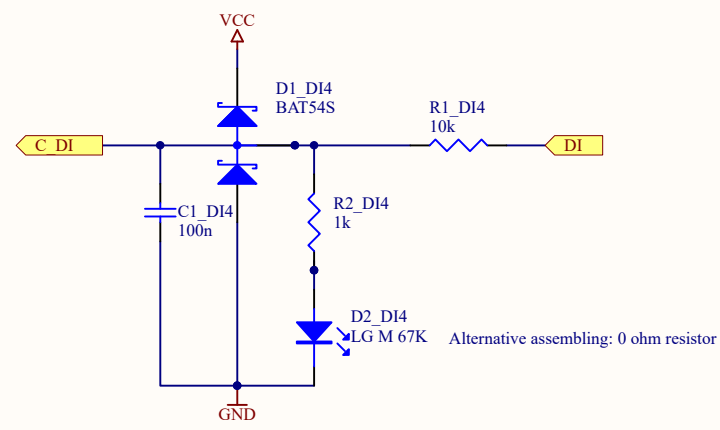


Alternative assembling: 0 ohm resistor

| Input conditions | D2 | R1 | R2 | Remarks |
|------------------|----------|-----|-----|--|
| Ie = 2mA @24V | 0 | 10k | 1k5 | Led not necessary if using AKKON STI-Led |
| Ie = 2mA @24V | LG M 67K | 10k | 690 | Led with Uf = 1.8 V |

| | | |
|---------------------------------|----------------|---------------------|
| Title: Digital inputs | | BURGER |
| Project: AKKON AIM1001 | | |
| Author: Gerhard Burger | | |
| Approved:* | | |
| Date: 06.11.2017 | Time: 10:11:33 | |
| Page: 3 of 6 | Version: 1.0a | |
| Schem. Rev.: 1.01 | | Project ID: AIM1001 |
| File: DigitalInputDriver.SchDoc | | |

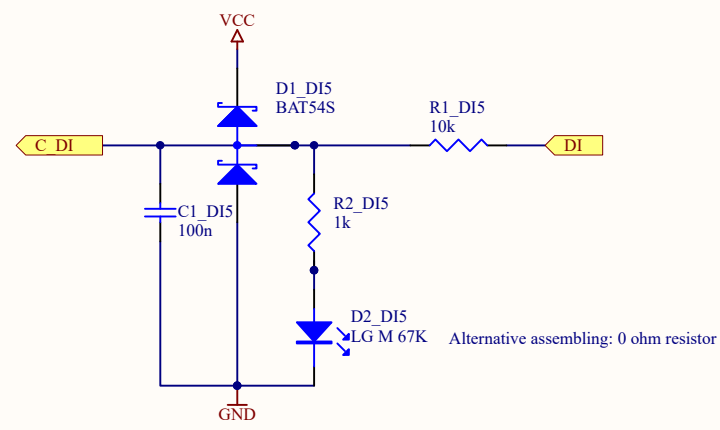
This material is protected by copyright. All rights reserved.
Please contact the publisher for permission to copy, distribute or reprint.



| Input conditions | D2 | R1 | R2 | Remarks |
|------------------|----------|-----|-----|--|
| Ie = 2mA @24V | 0 | 10k | 1k5 | Led not necessary if using AKKON STI-Led |
| Ie = 2mA @24V | LG M 67K | 10k | 690 | Led with Uf = 1.8 V |

| | | |
|---------------------------------|----------------|---------------------|
| Title: Digital inputs | | BURGER |
| Project: AKKON AIM1001 | | |
| Author: Gerhard Burger | | |
| Approved:* | | |
| Date: 06.11.2017 | Time: 10:11:33 | |
| Page: 3 of 6 | Version: 1.0a | |
| Schem. Rev.: 1.01 | | Project ID: AIM1001 |
| File: DigitalInputDriver.SchDoc | | |

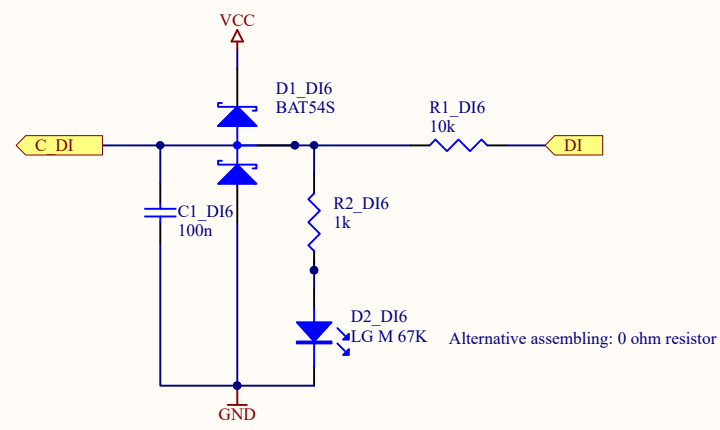
This material is protected by copyright. All rights reserved.
Please contact the publisher for permission to copy, distribute or reprint.



| Input conditions | D2 | R1 | R2 | Remarks |
|------------------|----------|-----|-----|--|
| Ie = 2mA @24V | 0 | 10k | 1k5 | Led not necessary if using AKKON STI-Led |
| Ie = 2mA @24V | LG M 67K | 10k | 690 | Led with Uf = 1.8 V |

| | | |
|---------------------------------|----------------|---------------|
| Title: Digital inputs | | BURGER |
| Project: AKKON AIM1001 | | |
| Author: Gerhard Burger | | |
| Approved:* | | |
| Date: 06.11.2017 | Time: 10:11:33 | |
| Page: 3 of 6 | Version: 1.0a | |
| Schem. Rev.: 1.01 | | |
| File: DigitalInputDriver.SchDoc | | |

This material is protected by copyright. All rights reserved.
Please contact the publisher for permission to copy, distribute or reprint.

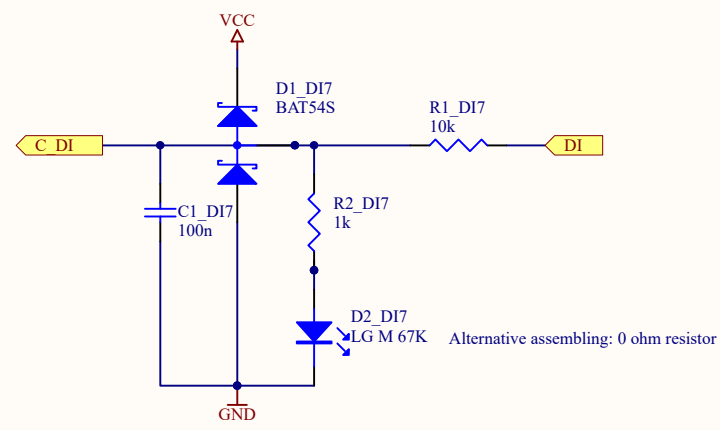


Alternative assembling: 0 ohm resistor

| Input conditions | D2 | R1 | R2 | Remarks |
|------------------|----------|-----|-----|--|
| Ie = 2mA @24V | 0 | 10k | 1k5 | Led not necessary if using AKKON STI-Led |
| Ie = 2mA @24V | LG M 67K | 10k | 690 | Led with Uf = 1.8 V |

| | | |
|---------------------------------|----------------|---------------------|
| Title: Digital inputs | | BURGER |
| Project: AKKON AIM1001 | | |
| Author: Gerhard Burger | | |
| Approved:* | | |
| Date: 06.11.2017 | Time: 10:11:33 | |
| Page: 3 of 6 | Version: 1.0a | |
| Schem. Rev.: 1.01 | | Project ID: AIM1001 |
| File: DigitalInputDriver.SchDoc | | |

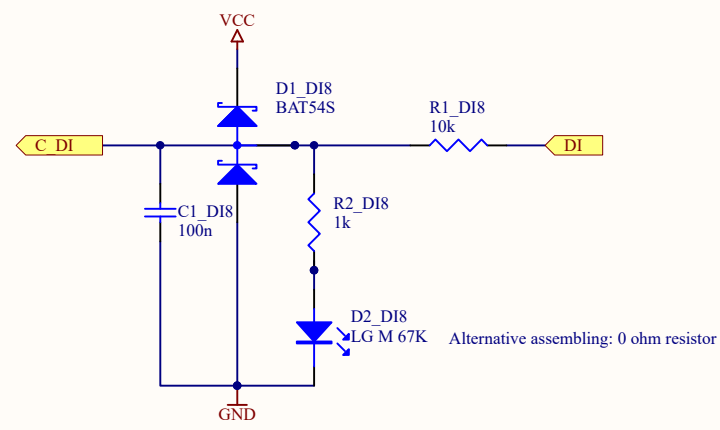
This material is protected by copyright. All rights reserved.
Please contact the publisher for permission to copy, distribute or reprint.



| Input conditions | D2 | R1 | R2 | Remarks |
|------------------|----------|-----|-----|--|
| Ie = 2mA @24V | 0 | 10k | 1k5 | Led not necessary if using AKKON STI-Led |
| Ie = 2mA @24V | LG M 67K | 10k | 690 | Led with Uf = 1.8 V |

| | | |
|---------------------------------|----------------|---------------------|
| Title: Digital inputs | | BURGER |
| Project: AKKON AIM1001 | | |
| Author: Gerhard Burger | | |
| Approved:* | | |
| Date: 06.11.2017 | Time: 10:11:33 | |
| Page: 3 of 6 | Version: 1.0a | |
| Schem. Rev.: 1.01 | | Project ID: AIM1001 |
| File: DigitalInputDriver.SchDoc | | |

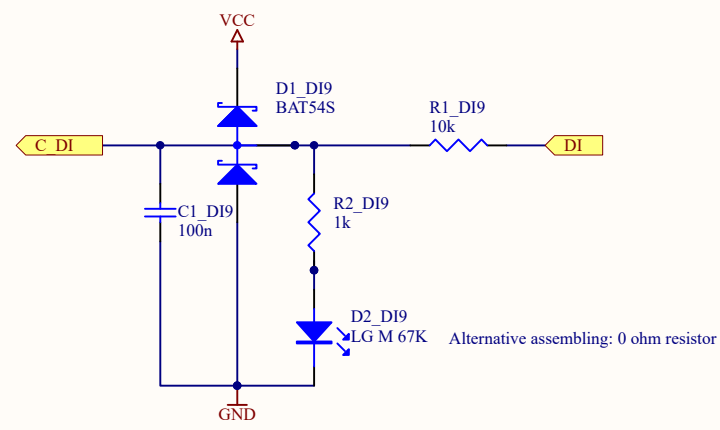
This material is protected by copyright. All rights reserved.
Please contact the publisher for permission to copy, distribute or reprint.



Alternative assembling: 0 ohm resistor

| Input conditions | D2 | R1 | R2 | Remarks |
|------------------|----------|-----|-----|--|
| Ie = 2mA @24V | 0 | 10k | 1k5 | Led not necessary if using AKKON STI-Led |
| Ie = 2mA @24V | LG M 67K | 10k | 690 | Led with Uf = 1.8 V |

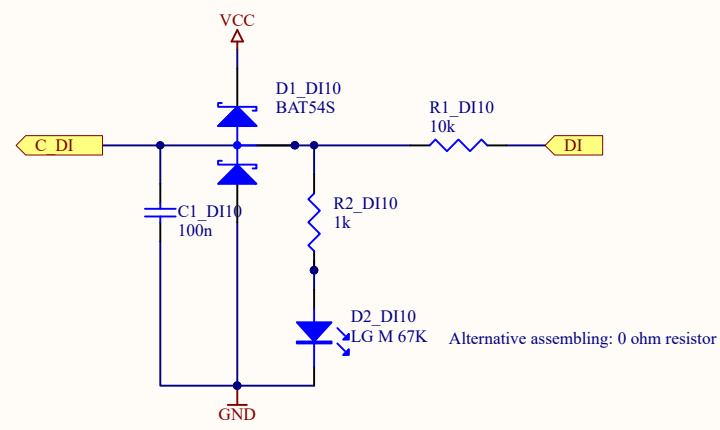
| | | |
|---------------------------------|----------------|---------------|
| Title: Digital inputs | | BURGER |
| Project: AKKON AIM1001 | | |
| Author: Gerhard Burger | | |
| Approved:* | | |
| Date: 06.11.2017 | Time: 10:11:33 | |
| Page: 3 of 6 | Version: 1.0a | |
| Schem. Rev.: 1.01 | | A4 |
| File: DigitalInputDriver.SchDoc | | |



| Input conditions | D2 | R1 | R2 | Remarks |
|------------------|----------|-----|-----|--|
| Ie = 2mA @24V | 0 | 10k | 1k5 | Led not necessary if using AKKON STI-Led |
| Ie = 2mA @24V | LG M 67K | 10k | 690 | Led with Uf = 1.8 V |

| | | |
|---------------------------------|----------------|---------------------|
| Title: Digital inputs | | BURGER |
| Project: AKKON AIM1001 | | |
| Author: Gerhard Burger | | |
| Approved:* | | |
| Date: 06.11.2017 | Time: 10:11:33 | |
| Page: 3 of 6 | Version: 1.0a | |
| Schem. Rev.: 1.01 | | Project ID: AIM1001 |
| File: DigitalInputDriver.SchDoc | | |

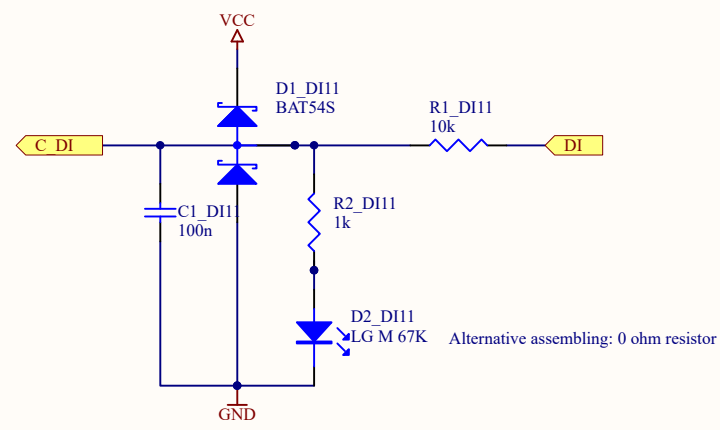
This material is protected by copyright. All rights reserved.
Please contact the publisher for permission to copy, distribute or reprint.



| Input conditions | D2 | R1 | R2 | Remarks |
|------------------|----------|-----|-----|--|
| Ie = 2mA @24V | 0 | 10k | 1k5 | Led not necessary if using AKKON STI-Led |
| Ie = 2mA @24V | LG M 67K | 10k | 690 | Led with Uf = 1.8 V |

| | | |
|---------------------------------|----------------|---------------|
| Title: Digital inputs | | BURGER |
| Project: AKKON AIM1001 | | |
| Author: Gerhard Burger | | |
| Approved:* | | |
| Date: 06.11.2017 | Time: 10:11:33 | |
| Page: 3 of 6 | Version: 1.0a | |
| Schem. Rev.: 1.01 | | |
| File: DigitalInputDriver.SchDoc | | |
| Project ID: AIM1001 | | |

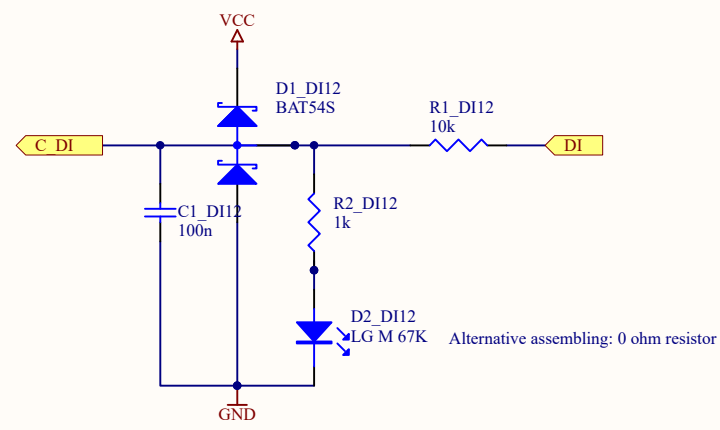
This material is protected by copyright. All rights reserved.
Please contact the publisher for permission to copy, distribute or reprint.



| Input conditions | D2 | R1 | R2 | Remarks |
|------------------|----------|-----|-----|--|
| Ie = 2mA @24V | 0 | 10k | 1k5 | Led not necessary if using AKKON STI-Led |
| Ie = 2mA @24V | LG M 67K | 10k | 690 | Led with Uf = 1.8 V |

| | | |
|---------------------------------|----------------|---------------------|
| Title: Digital inputs | | BURGER |
| Project: AKKON AIM1001 | | |
| Author: Gerhard Burger | | |
| Approved:* | | |
| Date: 06.11.2017 | Time: 10:11:34 | |
| Page: 3 of 6 | Version: 1.0a | |
| Schem. Rev.: 1.01 | | Project ID: AIM1001 |
| File: DigitalInputDriver.SchDoc | | |

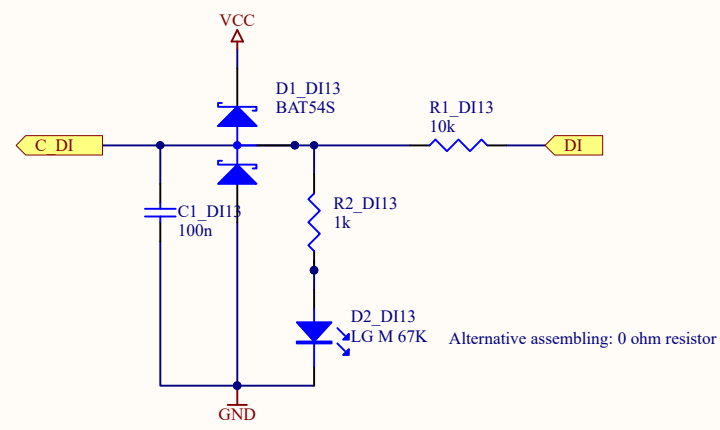
This material is protected by copyright. All rights reserved.
Please contact the publisher for permission to copy, distribute or reprint.



| Input conditions | D2 | R1 | R2 | Remarks |
|------------------|----------|-----|-----|--|
| Ie = 2mA @24V | 0 | 10k | 1k5 | Led not necessary if using AKKON STI-Led |
| Ie = 2mA @24V | LG M 67K | 10k | 690 | Led with Uf = 1.8 V |

| | | |
|---------------------------------|----------------|---------------------|
| Title: Digital inputs | | BURGER |
| Project: AKKON AIM1001 | | |
| Author: Gerhard Burger | | |
| Approved:* | | |
| Date: 06.11.2017 | Time: 10:11:34 | |
| Page: 3 of 6 | Version: 1.0a | |
| Schem. Rev.: 1.01 | | Project ID: AIM1001 |
| File: DigitalInputDriver.SchDoc | | |

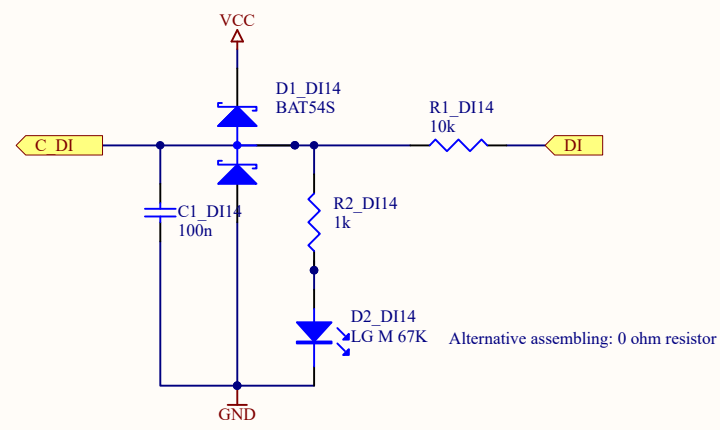
This material is protected by copyright. All rights reserved.
Please contact the publisher for permission to copy, distribute or reprint.



| Input conditions | D2 | R1 | R2 | Remarks |
|------------------|----------|-----|-----|--|
| Ie = 2mA @24V | 0 | 10k | 1k5 | Led not necessary if using AKKON STI-Led |
| Ie = 2mA @24V | LG M 67K | 10k | 690 | Led with Uf = 1.8 V |

| | | |
|---------------------------------|----------------|---------------------|
| Title: Digital inputs | | BURGER |
| Project: AKKON AIM1001 | | |
| Author: Gerhard Burger | | |
| Approved:* | | |
| Date: 06.11.2017 | Time: 10:11:34 | |
| Page: 3 of 6 | Version: 1.0a | |
| Schem. Rev.: 1.01 | | Project ID: AIM1001 |
| File: DigitalInputDriver.SchDoc | | |

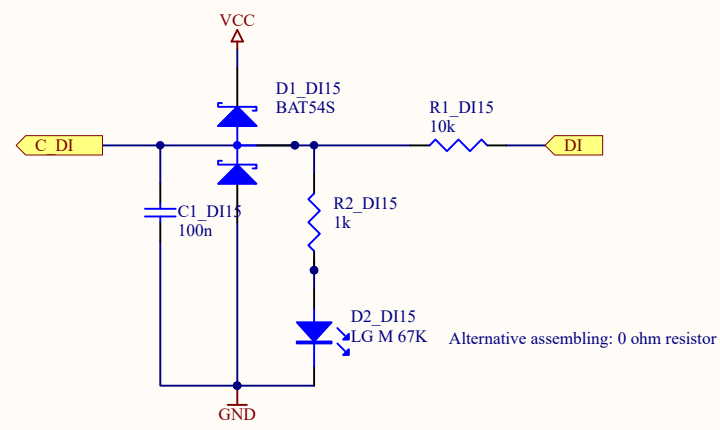
This material is protected by copyright. All rights reserved.
Please contact the publisher for permission to copy, distribute or reprint.



| Input conditions | D2 | R1 | R2 | Remarks |
|------------------|----------|-----|-----|--|
| Ie = 2mA @24V | 0 | 10k | 1k5 | Led not necessary if using AKKON STI-Led |
| Ie = 2mA @24V | LG M 67K | 10k | 690 | Led with Uf = 1.8 V |

| | | |
|---------------------------------|----------------|---------------|
| Title: Digital inputs | | BURGER |
| Project: AKKON AIM1001 | | |
| Author: Gerhard Burger | | |
| Approved:* | | |
| Date: 06.11.2017 | Time: 10:11:34 | |
| Page: 3 of 6 | Version: 1.0a | |
| Schem. Rev.: 1.01 | | |
| File: DigitalInputDriver.SchDoc | | |

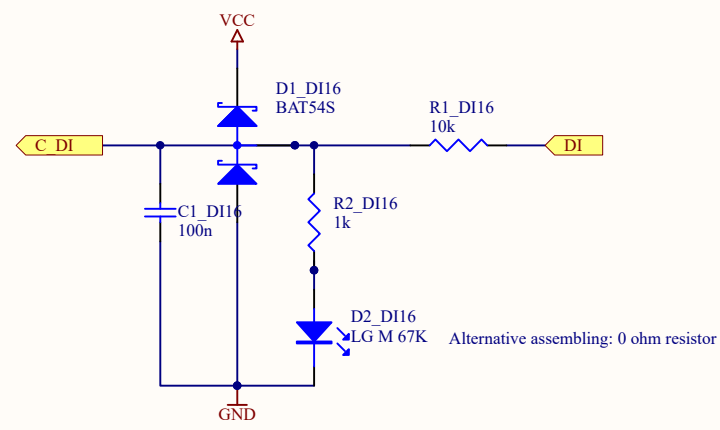
This material is protected by copyright. All rights reserved.
Please contact the publisher for permission to copy, distribute or reprint.



| Input conditions | D2 | R1 | R2 | Remarks |
|------------------|----------|-----|-----|--|
| Ie = 2mA @24V | 0 | 10k | 1k5 | Led not necessary if using AKKON STI-Led |
| Ie = 2mA @24V | LG M 67K | 10k | 690 | Led with Uf = 1.8 V |

| | | |
|---------------------------------|----------------|---------------|
| Title: Digital inputs | | BURGER |
| Project: AKKON AIM1001 | | |
| Author: Gerhard Burger | | |
| Approved:* | | |
| Date: 06.11.2017 | Time: 10:11:34 | |
| Page: 3 of 6 | Version: 1.0a | |
| Schem. Rev.: 1.01 | | |
| File: DigitalInputDriver.SchDoc | | |

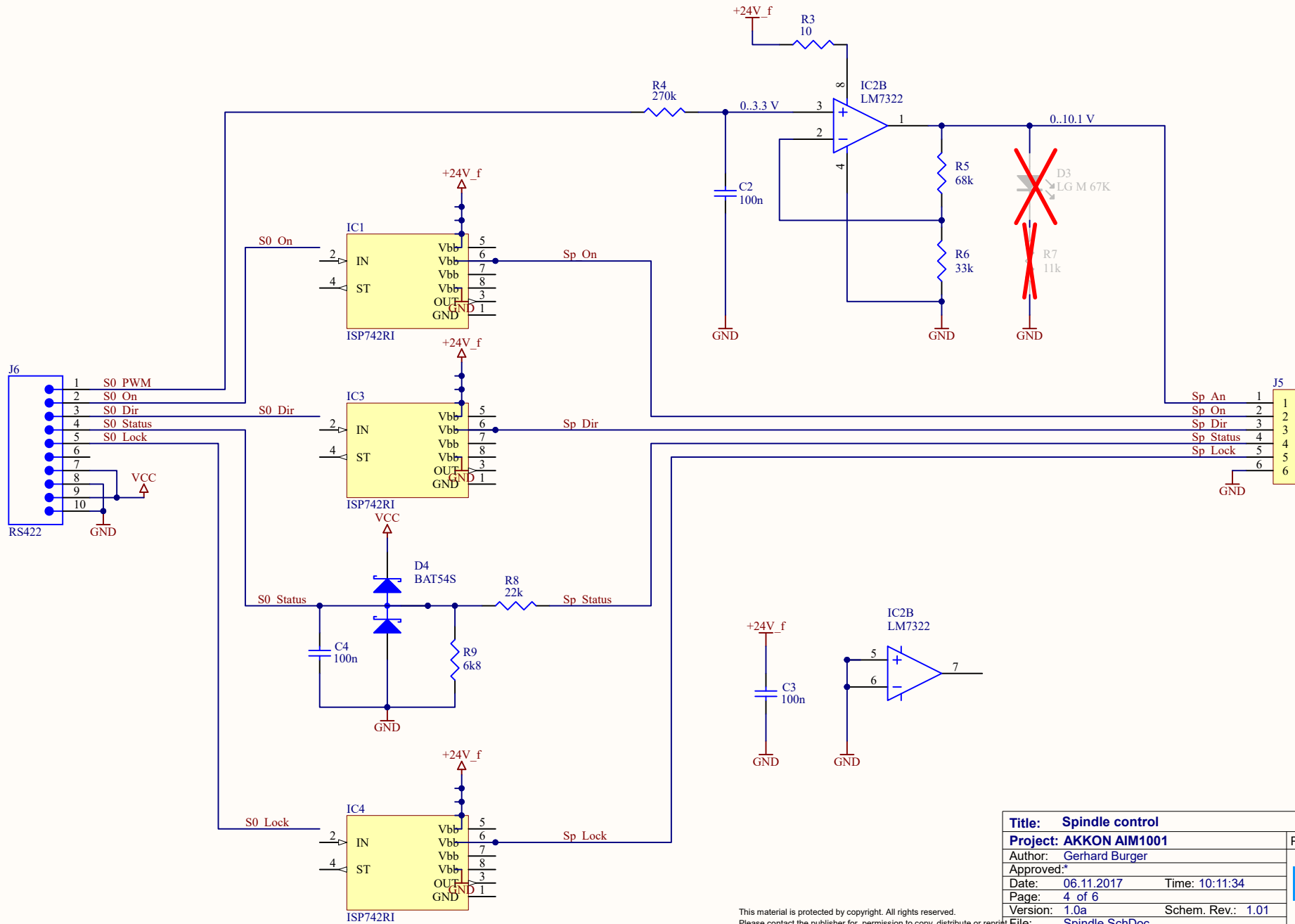
This material is protected by copyright. All rights reserved.
Please contact the publisher for permission to copy, distribute or reprint.



| Input conditions | D2 | R1 | R2 | Remarks |
|------------------|----------|-----|-----|--|
| Ie = 2mA @24V | 0 | 10k | 1k5 | Led not necessary if using AKKON STI-Led |
| Ie = 2mA @24V | LG M 67K | 10k | 690 | Led with Uf = 1.8 V |

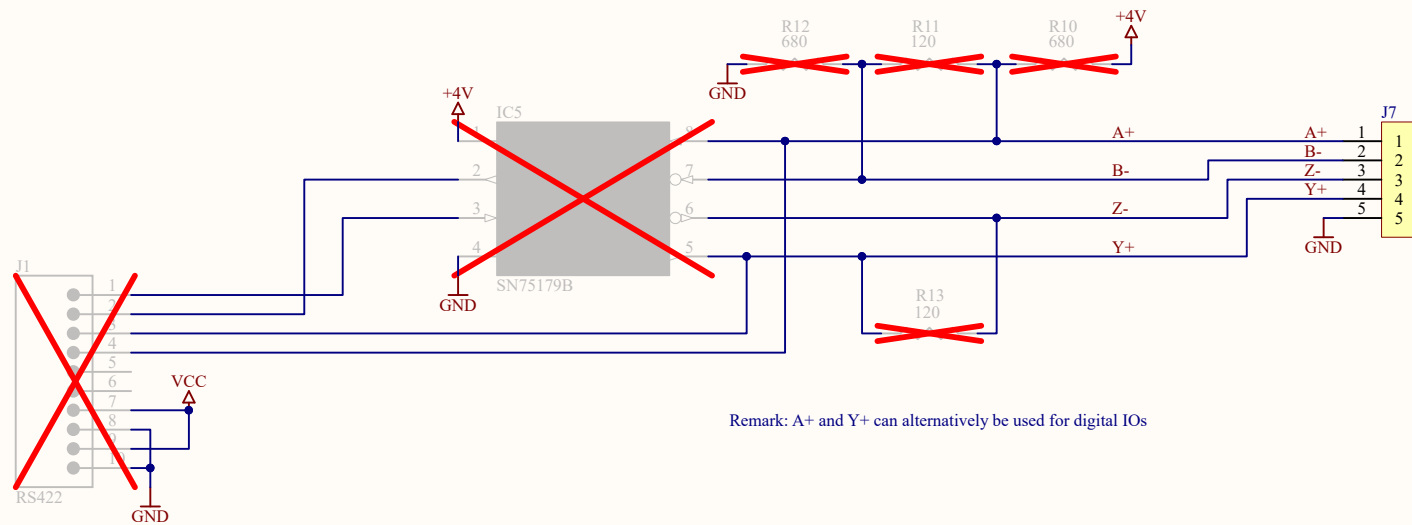
| | | |
|---------------------------------|----------------|---------------|
| Title: Digital inputs | | BURGER |
| Project: AKKON AIM1001 | | |
| Author: Gerhard Burger | | |
| Approved:* | | |
| Date: 06.11.2017 | Time: 10:11:34 | |
| Page: 3 of 6 | Version: 1.0a | |
| Schem. Rev.: 1.01 | | |
| File: DigitalInputDriver.SchDoc | | |
| Project ID: AIM1001 | | |

This material is protected by copyright. All rights reserved.
Please contact the publisher for permission to copy, distribute or reprint.



| | | |
|-------------------------------|----------------|----------------------|
| Title: Spindle control | | Project ID: AIM1001 |
| Project: AKKON AIM1001 | | |
| Author: Gerhard Burger | | BURGER |
| Approved:* | | |
| Date: 06.11.2017 | Time: 10:11:34 | |
| Page: 4 of 6 | Version: 1.0a | |
| Schem. Rev.: 1.01 | | File: Spindle.SchDoc |

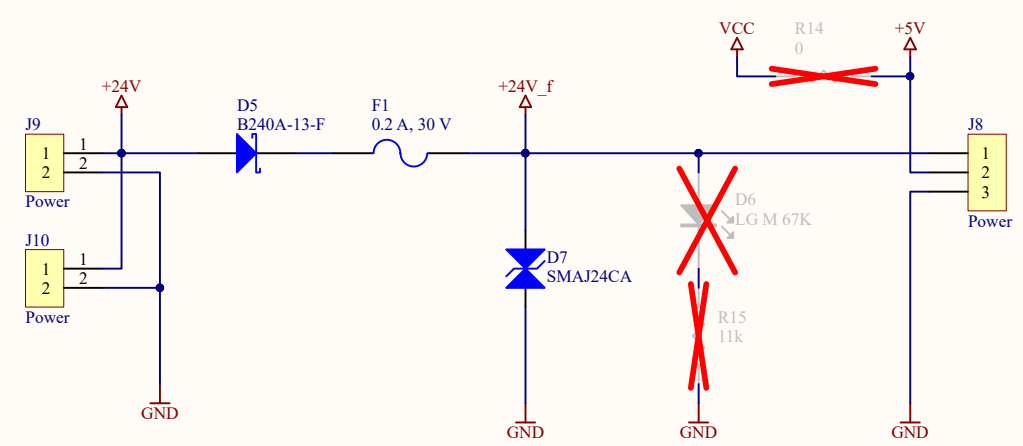
This material is protected by copyright. All rights reserved.
Please contact the publisher for permission to copy, distribute or reprint.



Remark: A+ and Y+ can alternatively be used for digital IOs

| | | |
|-------------------------------|-------------------|---------------------|
| Title: RS422 Driver | | Project ID: AIM1001 |
| Project: AKKON AIM1001 | | |
| Author: Gerhard Burger | | BURGER |
| Approved: | | |
| Date: 06.11.2017 | Time: 10:11:34 | |
| Page: 5 of 6 | | |
| Version: 1.0a | Schem. Rev.: 1.01 | |
| File: RS422Driver.SchDoc | | |

This material is protected by copyright. All rights reserved.
Please contact the publisher for permission to copy, distribute or reprint.



| | | |
|-------------------------------|-------------------|---------------------|
| Title: Power | | Project ID: AIM1001 |
| Project: AKKON AIM1001 | | |
| Author: Gerhard Burger | | BURGER |
| Approved: | | |
| Date: 06.11.2017 | Time: 10:11:34 | |
| Page: 6 of 6 | | |
| Version: 1.0a | Schem. Rev.: 1.01 | |
| File: Power24V.SchDoc | | |

This material is protected by copyright. All rights reserved.
Please contact the publisher for permission to copy, distribute or reprint.